



# Old Morlatton Village MESSENGER

*The Historic Preservation Trust of Berks County*

Volume XVI

Number 2

June 2008

## TRUST HIRES EXECUTIVE DIRECTOR



Lee Zelewicz received his bachelors of the arts degree in sociology/anthropology and music with a minor in archaeology from Lycoming College, Williamsport, PA, in 2006 and his masters in anthropology from the School of Human Development and Social Change at Arizona State University, Tempe, AZ in 2008. He has completed projects for the National Museum of Natural History, Smithsonian Institution; the Bureau of Historic Preservation, Pennsylvania

Historical and Museum Commission; and the Eastern Delaware Nations. Lee has been involved in numerous community service projects and was a teaching assistant at both Lycoming College and Arizona State University.

### Words from the new Executive Director

It is a privilege to be appointed this position and to serve Historic Preservation Trust of Berks County. I plan to draw on my experiences as a socio-cultural anthropologist and work in research and fundraising to advance this organization. I look forward to building partnerships within the community, providing a sustainable economic and cultural base, and promoting the Historic Preservation Trust as a leader of preservation in Berks County and the region. I see a bright and expanding future for this organization as it becomes an even more prominent voice as an educator and advocate for historic preservation. The architectural and historical significance found in Berks County and geographical proximity to major urban areas provide an excellent opportunity to conserve an important portion of our nation's history and involve a large public audience.

## 2008 BOARD OF DIRECTORS

### Officers:

President: Matthew Barnhart  
Vice President: Ann Coldren  
Secretary: Linda Highes  
Treasurer: Betsy Ward  
Financial Secretary: Susan Yoder  
Membership: Laura Schmale

### Board Members:

Matthew Barnhart  
Harold Boyer  
Donna Carpenter  
Ann Coldren  
John Hibschan  
Phoebe Hopkins  
Linda Hughes  
Thomas Keim  
Brad Kissam  
James Lewars  
Susan Miller-Speros  
Philip Pendleton  
Leslie Rebman  
Laura Schmale  
Eleanor Shaner  
Scott Stepp  
Betsy Ward  
Priscilla Walsky  
Marjorie Yocum  
Susan Yoder

Dedicated to maintaining and preserving historically and archetectorally significant properties

## **MATTHEW BARNHART ELECTED NEW TRUST PRESIDENT**

I am very pleased and somewhat daunted by assuming the presidency of this fine organization. Our collection of historic properties is truly remarkable, what has been accomplished over the years is noteworthy. Our predecessors with the Trust have done justice and paid homage to our predecessors who settled the middle Schuylkill. My immediate predecessor, John Hibschman, has positioned the Trust to take significant strides toward realizing our potential as a regional historic resource.

The initial such stride was taken on Friday, the 13th of June by hiring Lee Zelewicz as Executive Director (see cover article). We initiated a search at the beginning of the year at a board "retreat" in John's office in Reading. There were a number of well qualified candidates for the position. A dozen or so board members met with approximately a half dozen people over several months. We could have been well served by any of the folks with whom we met but there was a broad consensus to make the offer to Lee and we are pleased he accepted. He started June 23rd and completed his first day on the job by appearing with several board members on BCTV.

Over the past several years, we have created an innovative means to preserve and utilize the Hottenstein Mansion. We have taken a façade easement on a threatened historic home in Exeter, we have formulated an exciting long range plan for Morlatton to become a thriving historic site. We have begun to develop a consulting relationship with a local municipality for preservation of a rather unique historic barn.

With the help of the Shelley Pennsylvania German Heritage Fund we have established an Atlas of Architectural Drawings and will be establishing a searchable archive of documents and images pertaining to our buildings.

These efforts are both supplementary and complementary to the preservation and restoration of our buildings. We have re-roofed the White Horse Inn. We weathered significant flood damage and still have some work to do. The Douglass Mansion stabilization is complete and we can now begin the interior restoration. Again, with the help of the Shelley Fund, we are thoroughly assessing the condition of the DeTurk and Keim properties.

As president, with Lee's help, with the support of an excellent board and with growing and involved membership, I look forward to the Trust becoming a more potent force for preservation. I will be asking our loyal members to help in recruiting new members. We will make the properties available to any member who would like to host a "house party" to introduce interested friends, family and associates to the Trust. We will be contacting local history organizations and planners to identify opportunities. We will reach out to similar organizations in neighboring counties to learn from them and foster regional collaboration.

I have heard it said that the Historic Preservation Trust of Berks County is the best kept secret in the county. By the end of my term as president, that will no longer be the case. We will be the best known, most effective historic asset in the region.

Matt Barnhart

### VISITING OUR SWEDISH HERITAGE

On April 24, 2008 Linda Hughes, Phoebe Hopkins, Susan Speros and Priscilla Walsky met with Bob Bartmann, Planning Consultant, for a trip to the American Swedish Historical Museum , Bartram’s Garden and the Swedish Log Cabin all located in the Philadelphia area.

The museum was founded in 1926 by Swedish-American historian Amandus Johnson to preserve Swedish-American heritage and history and act as an educational forum.

The building's design is based on a 17th century manor house in Sweden. The architect, John Nyden, a Swedish-American from Chicago, combined Swedish and American elements by modeling the exterior arcades on those of Mount Vernon. The cupola is a copy of the one atop Stockholm’s City Hall.



Stuga featuring corner fireplace

Unfortunately time permitted visiting only the first floor which included the Golden Map Room, Colonial Room, New Sweden Room

Nobel: Celebrating a Century of the Noble Prizes, Stuga (Pioneer Room), and the Nord Library.

The next stop was Bartram’s Garden the oldest surviving botanic garden in America. The garden is on the site of noted American botanist John



View of Bartram’s house on the river side

Bartram’s stone house and farm

on the Schuylkill River. He built the original house between 1728 and 1731.

The house still stands as does his original garden and greenhouse. On this property once stood a stone house built and lived in by Mouns Jones until moving to Morlatton in 1704. It is uncertain as to whether the house was incorporated into John Bartram’s house or whether it was a separate building as depicted in an early drawing of the property.

The house, gardens and related business activities remained in the family until 1850 when financial difficulties led to the sale of the property outside the family to Andrew Eastwick. Upon Eastwick's death in 1879 a campaign was organized to preserve the estate. In 1891 control of the site was turned over to the City of Philadelphia and it remains protected as a city park.



Swedish Log Cabin

The day ended with a visit to the Swedish Log Cabin located in Drexel Hill along the Darby

Creek. It is the only remaining cabin of several built along the creek during the era of New Sweden (1638-1655).

Although much altered, its Scandinavian roots can be seen in features such as logs left round with the bark on, corner fireplaces completely inside the building, distinct extended corner notching of the logs and the fact



Note notched logs resting on a boulder

that the weight bearing corners are anchored on existing boulders. The cabin is open to visitors Saturday and Sunday afternoons from 1 to 4 pm.

## SPRING LUNCHEON

A Mother's Day luncheon was held May 4, 2008, a beautiful spring day, at the Stone



Margie Darrah and her daughter Margie Yocum enjoying the ambiance

House in Wyomissing. The luncheon consisted of chicken salad, perfection salad, a croissant, assorted homemade desserts, tea and coffee. The Cammerata String Quartet provided music during the afternoon.



Phoebe and Lloyd Hopkins among the hanging baskets

The porch of the Stone House was filed with a variety of spring plants and hanging baskets for sale.

The committee would like to thank all the people who purchased tickets for the event and the following businesses for their generous donations: Wegman's Poultry, Sweet Street Desserts, Esbenshades Nursery, Ladish Associates, Wal-Mart, TNT Air, Pikeville Equipment, Rockland Signs and Period Design.

### MEET BOARD MEMBER ELEANOR SHANER



*1. As a member of the Trust since 1967 and a Board member since 1971, how has the Trust evolved over the years?* When I became a member of the Trust we owned only two buildings.

Over the years our responsibilities have greatly increased. Now we can look forward to a young executive director to help us accomplish our mission and make us better known in the

community.

*2. How did you become involved in the Historic Preservation Trust?* The efforts of the founders of the Trust have helped me learn more about Berks County and its history. I've always been interested in history. I was brought up in a farm house built in 1777. My mother's family came to the Oley Valley as early as 1746 and her love of history and heritage was instilled in me. I met my husband, Richard, when he was restoring a farmhouse in Lobachsville.

*3. What do you see as the biggest challenge facing the Trust?* Raising necessary funds to accomplish our goals and keep our properties in good shape. Restoration is not a once and done thing. One of our biggest problems is the flooding which occasionally washes away our efforts and we have to start all over.

*4. What do you see as the future of the Trust?* We need to make people aware of the treasures here in Berks County and learn from the fortitude of the people who came here to carve their place in the wilderness. They were not afraid of hard work.

*Random thoughts:* The experiences I've had with the Trust have enriched my life. I've enjoyed cooking for the various events and the friendships I've made on the board and in the membership are special. I've enjoyed promoting the Trust and I'm proud of what we have accomplished as a volunteer organization. We need to tell our story and make people aware of their heritage and history. You can learn from the past to help avoid making mistakes in the future.

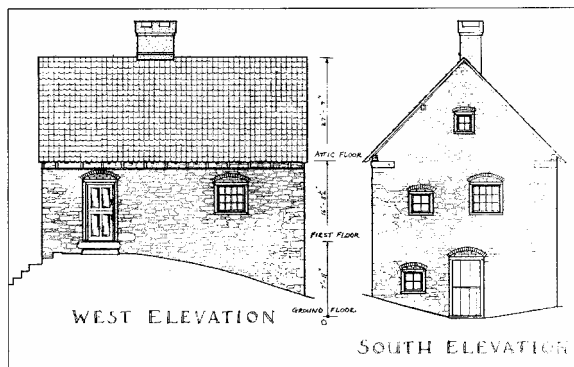
**If you haven't sent in your 2008 dues, please do so as soon as possible. Exciting times are ahead for the organization but we depend on your help. Thank you.**

<b>Individual \$25</b>	<b>Family \$35</b>
<b>Supporting \$50</b>	<b>Sustaining \$75</b>
<b>Contributing \$100</b>	<b>Patron \$250</b>
<b>Corporate \$500</b>	<b>My Special Gift \$</b>

## ATLAS OF ARCHITECTURAL DRAWINGS

HISTORIC PRESERVATION TRUST OF BERKS COUNTY  
 PO Box 245, Douglassville, PA 19518 • 610-385-4762  
 info@historicpreservationtrust.org

Price: Non-Members \$135.00  
*(Includes One Year Individual Membership at Purchaser's Option)*  
 Members: \$95.00 *(One Atlas per Membership)*  
 All non-exempt purchases subject to 6% Pennsylvania Sales Tax  
 Shipping extra at cost *(Purchaser may pick up by arrangement)*



Drawings are adapted to uniform format on 14" x 19" sheets and digitally edited to produce optimum size, clarity, detail and legibility.

- **Introduction** provides architectural and historical background and summary of contents;
- **Site and Structure Descriptions** of eight primary buildings, the first four forming Morlatton Village, now within Douglassville:
  - Mouns Jones House** (1716), built for Swedish settlers on the banks of the Schuylkill River, the oldest documented dwelling in Berks County;
  - Bridge Keeper's House** (1780), overlooked the covered bridge to Chester County;
  - White Horse Tavern** (c. 1762), a King's Highway landmark of Old Morlatton Village in Revolutionary War period;
  - George Douglass House** (c. 1763-1765), sandstone Georgian center-hall mansion, later with a general store addition;
  - Jacob Keim Farmhouse** (1753), undisturbed condition, featuring pent roof, walk-in fireplace, much original woodwork and detail;
  - Jacob Keim Cabin** (c. 1753), an ancillary dwelling or multi-function structure with a restored clay-tile roof;
  - Johann DeTurk Cabin** (1767), another ancillary dwelling, originally occupied by Huguenots;
  - David Hottenstein Mansion** (1783), combining formal "Georgian" elements with Germanic folk carving and joinery;
- **Table of Drawings**, with brief description of each.

Payment by  cash  check  money order

Qty	Description	Amount
	Atlas of Architectural Drawings	
	6% PA Sales Tax (when applicable)	
	Shipping (Please email or call for amount)	
	Total Enclosed	

Check here to elect membership at no extra cost.

Name \_\_\_\_\_

Address \_\_\_\_\_  
 \_\_\_\_\_

Phone \_\_\_\_\_

Email \_\_\_\_\_

**Mouns Jones  
Annual Country  
Fair**

Saturday,  
September 27, 2008

**10 AM to 4 PM**

*Admission \$2.00  
(16 years of age and older)*

*On Site Parking*

TRADITIONAL CRAFTS,  
  
FOLK ART,  
  
FALL FLOWERS,  
  
& BAKED GOODS  
  
ON THE  
  
VILLAGE GREEN

**HISTORIC  
PRESERVATION TRUST  
OF  
BERKS COUNTY  
610-385-4762**

Editor: Priscilla Walsky  
 Contributors: Anne Coldren, Matt Barnhart, Linda Hughes, Lee Zelewicz  
 Photography: Lorah Hopkins, Phoebe Hopkins, Priscilla Walsky  
 Web Site: www.historicpreservationtrust.org